

Case Info

DR. NAME (Required) _____ CASE DUE DATE _____ ACCOUNT# _____

DR. ADDRESS _____

SIGNATURE OF DENTIST (Required) _____ DENTIST LICENSE# (Required) _____ DR. PHONE _____ DR. EMAIL _____

PATIENT NAME (Required) _____

Person signing this authorization accepts sole responsibility for payment and agrees to pay all legal and collection costs in the event of suit, including reasonable fees. Dentist's signature will authorize ProSomnus® Sleep Technologies to construct, alter or repair the device described on this requisition.

1 Sleep Device

[IA] Iterative Advancement Devices

- [IA] Monogram Series A with U4 Advancements 0.0, 1.0, 2.0, 3.0, 4.0 (mm) + UA
- [IA] SELECT with U4 Advancements 0.0, 1.0, 2.0, 3.0, 4.0 (mm) + UA

(Optional Add-On)

[MOG] Morning Occlusal Guide with Device

- [MOG]: Design includes an anterior bite ramp.
 - Qty. 1
 - Qty. 2 (default)
- [MOG] MIP: Design enables true, full occlusal contact.
 - Qty. 1
 - Qty. 2 (default)

Additional Arches *(please specify below)*

3 Special Instructions

2 Monogram™ Customization

Standard design default if left blank.

Splint Coverage

- Full Lingualless
- Full Lingual Coverage
- Lingualless Anterior with Full Posterior Coverage
- Tapered Posterior

Post Design

- 70° Dual Posts
- 90° Non-Radius Dual Posts

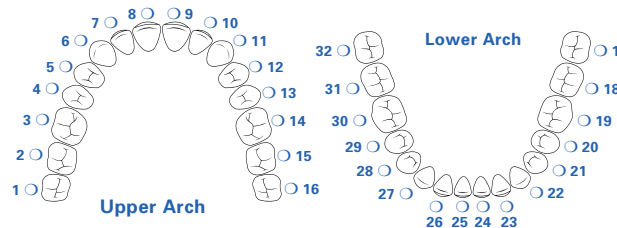
Other Customizations

- Anterior Airway (2.0mm default)
- Anterior Discluder (4.0mm default)
- Metal-Free Hooks

OK to open bite as required for design.

See back for descriptions, terms and conditions.

Optional: Please indicate teeth for block out using the chart below (no device retention).



S Supplies

- Backup Device
- [IA] Sample Model
- [IA] SELECT Sample Model
- ProSomnus Sleep Device Rx's
- George Gauge Kit
- 3.0mm Bite Forks
- 3.0mm Digital Bite Forks
- Extra Carrying Case

Phone: 0191 565 2788
 Ashfordorthodontics.co.uk
 info@ashfordorthodontics.co.uk



Ashford is a distributor for ProSomnus Sleep Technologies.



ProSomnus [IA] Standard



ProSomnus [IA] Standard Default Design Includes: Lingualless Anterior Coverage; Full Posterior Coverage; Dual 90° Radius Posts; Flat Plane Splint Design; ProSomnus [UA] Unlimited Advancement Arches.

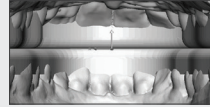
ProSomnus [IA] SELECT



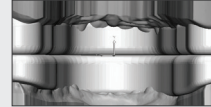
ProSomnus [IA] SELECT Standard Default Design Includes: Lingualless Anterior Coverage; Full Posterior Coverage; Dual 90° Radius Posts; Flat Plane Splint Design. NOTE: The SELECT device is recommended for petite patients whose advancement is anticipated to be less than 5.0mm.

ProSomnus Monogram Customization Options

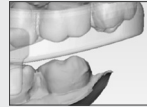
FULL LINGUALESS



FULL LINGUAL COVERAGE



TAPERED POSTERIOR



METAL-FREE HOOKS



DUAL 70° RADIUS POSTS



DUAL 90° NON-RADIUS POSTS



ANTERIOR AIRWAY

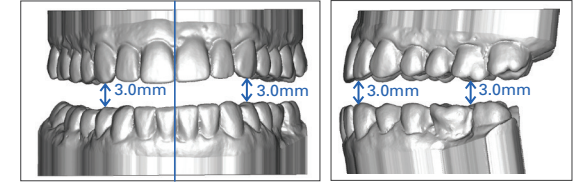


ANTERIOR DISCLUDER



ProSomnus Sleep Device Bite Requirement

ProSomnus devices require 3.0mm of clearance at the lowest cusp point. The diagram below shows how to visualize the amount of space required.



Doctors have been reported using several additional techniques when issues arise to make sure they have enough clearance:

- Moving the bite fork to include dangling cusps.
- Modifying the bite fork to capture dangling cusps.
- Adding material to the incisal guide area to open the vertical more.
- Measuring with a caliper in the bicuspid and molar areas.
- Shortening the device when there is an excessive Curve of Spee.

Policy Guidelines

DIGITAL IMPRESSION POLICY: ProSomnus® Sleep Technologies receives digital impressions via Ashford. For quality assurance purposes, sleep devices made from digital impressions are fit against a 3D printed model of the digital impression. We strongly recommend if sending digital impressions to also send a digital bite, rather than physical to avoid manufacturing delays. If sending a physical bite with digital impressions, please notify: info@ashfordorthodontics.co.uk or notate when submitting files.

WARRANTY: ProSomnus 100% guarantees the workmanship and materials of this device. ProSomnus' service warranty can be found at ProSomnus.com (Terms and Conditions section).

DISCLAIMER: ProSomnus cannot warrant against customer dissatisfaction due to diagnosis, treatment

decisions, style, or brand of device chosen. We're happy to assist you with any device adjustments and/or modifications, and to provide you with any information you may need to learn about the use of these devices.

OUR PROMISE TO YOU: Upon incoming examination of your case, if the Ashford and ProSomnus manufacturing teams determine that there is not enough bite clearance, nor enough retention to accommodate the standard design, we will NOT make changes without your knowledge or authorization unless noted in your preferences. Our manufacturing process will be temporarily stopped until we are able to contact you for a consultation regarding design alternatives that you prefer and prescribe. The ProSomnus Sleep & Snore Devices are CE marked, FDA cleared and registered Medical Devices.